

## PEASANT TOP

The peasant top is designed to fit **PLUSH LIFE®** bears, cats and dolls. Go to [elaineheigldesigns.com](http://elaineheigldesigns.com) to view the PLUSH LIFE experience.

**PLUSH LIFE®**  
By Elaine Heigl Designs



**SKILL LEVEL:** Beginner experience using a sewing machine.

### SUPPLIES:

**Pinafore:** fat quarter cotton.  
8 1/2" of 1/4" or 1/8" wide elastic.

### TOOLS & NOTIONS:

Pins, needle, shears, thread  
Bobbin or tiny safety pin for inserting elastic through casing.

### EQUIPMENT:

Sewing machine, iron

### GENERAL NOTES

Stitch 1/4" seams

Stitch setting: 2.5

### SEWING TIP

Hold thread ends whenever starting to stitch a seam.  
Press seams open.

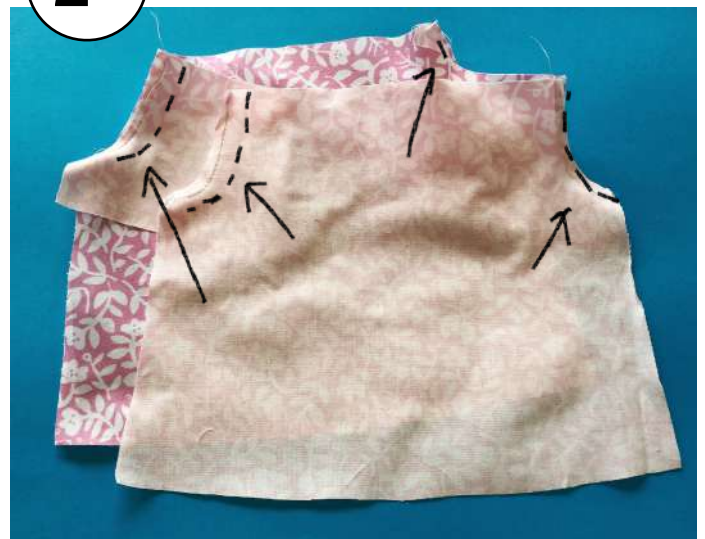
## Peasant dress or top

1



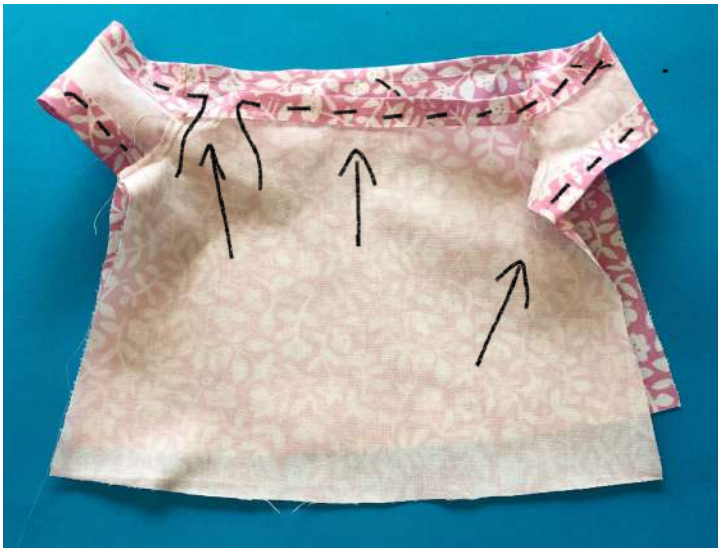
**Cut** 2 dress pieces on fold, and 2 sleeve pieces.

2



**Stitch** sleeves to dress front and back at armholes.

3



**Fold** and press **upper edge** 5/8" to inside. **Stitch** 1/2" from folded edge to make casing, leaving a small opening to insert elastic.

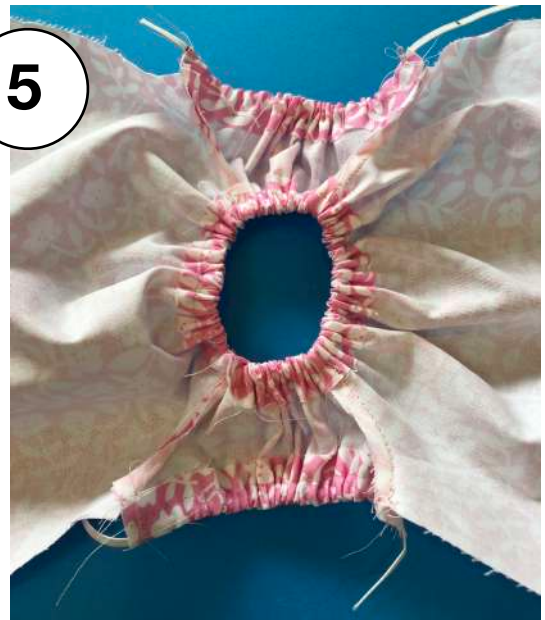
**Fold** and press sleeve hems 5/8" to inside. **Stitch** 1/2" from folded edge to make casing.

4



elastic: **Mark** length of elastic pieces as shown. **Cut** elastic, leaving 1" ends past markings.

5



Using a safety pin or bobbin, **insert elastic** through dress neck casing. Adjust elastic and tie or stitch together ends securely.

Using a safety pin or bobbin, **insert elastics** through sleeve casings. Stitch elastic ends to secure.

6



Stitch sides.

7



Fold and press hem 5/8". Stitch 1/2" from edge.



Turn right side out.

Items made from **PLUSH LIFE®** patterns may be made and sold by individual hand crafters, but are not to be copied, manufactured or used for commercial purposes. The cut-and-sew fabric panels are not to be resold, redistributed or copied. All rights reserved, **Elaine Heigl Designs, LLC, 2019.**

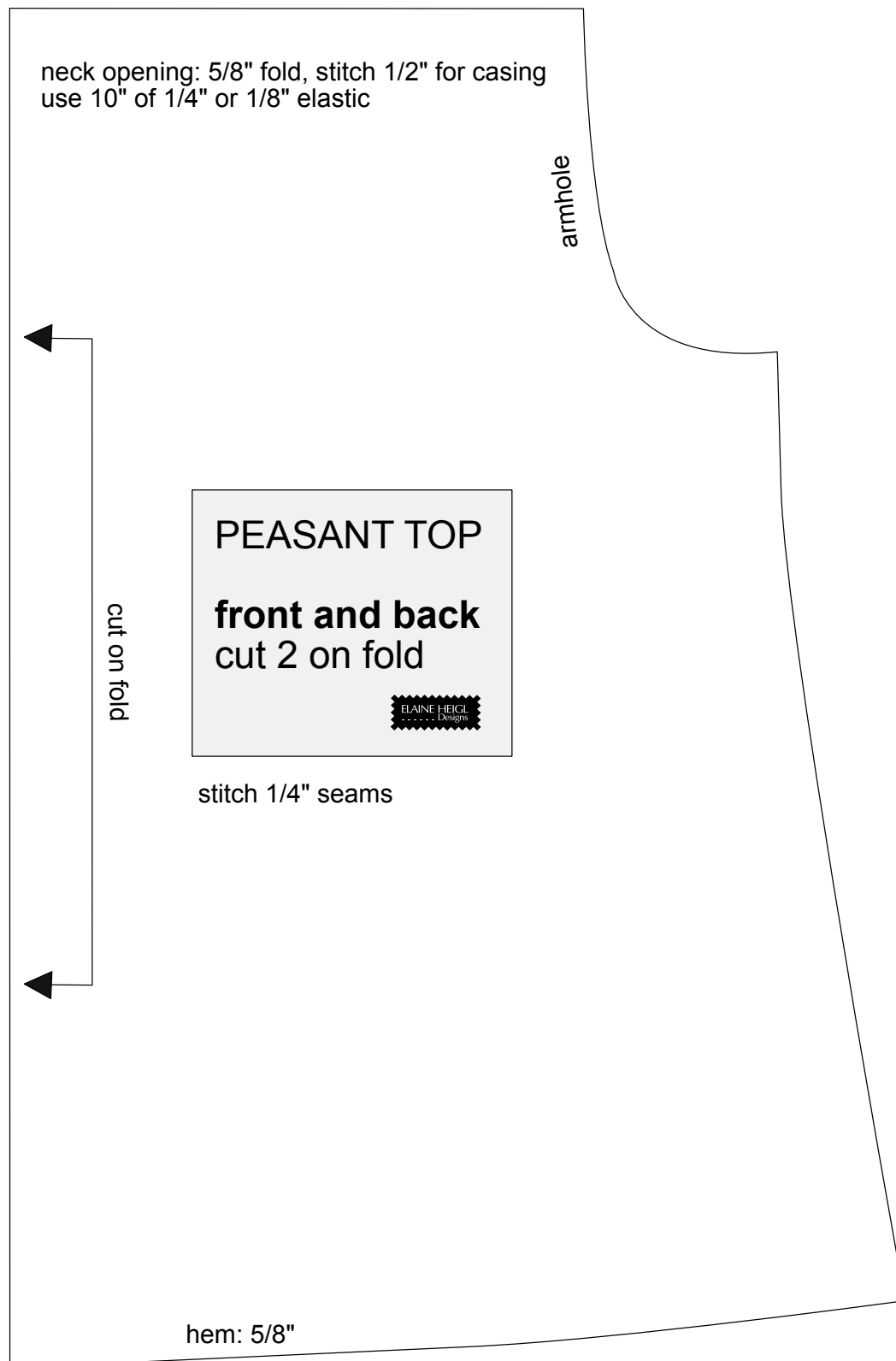
# PEASANT TOP FOR A **PLUSH LIFE**

page 1 of 2

supplies: 20" of 1/4" or 1/8" elastic

go to [elaineheigldesigns.com](http://elaineheigldesigns.com) for links, instructions

and inspiration to enhance your **PLUSHLIFE** experience!



PEASANT TOP FOR A **PLUSH LIFE**  
page 2 of 2

