

## PINAFORE AND COLLAR PATTERN AND GUIDE SHEET

The patterns for this collar and jumper set are designed to fit **PLUSH LIFE®** bears, cats and dolls. Go to [elaineheigl designs.com](http://elaineheigl designs.com) for the complete **PLUSH LIFE®** experience.

**PLUSH LIFE®**  
By Elaine Heigl Designs

**PINAFORE PATTERN ON PAGE 4**  
**COLLAR PATTERN ON PAGE 5**



**SKILL LEVEL:** Beginner experience using a sewing machine.

### SUPPLIES:

**Pinafore:** fat quarter cotton. 8 1/2" of 1/4" wide elastic.

**Collar:** 1" velcro, optional ribbon, button, or trim.

### TOOLS & NOTIONS:

Pins, needle, shears, thread

Safety pin for inserting elastic through pinafore casing.

### EQUIPMENT:

Sewing machine, iron

### GENERAL NOTES

Stitch 1/4" seams

Stitch setting: 2.5

### SEWING TIP

Hold thread ends whenever starting to stitch a seam.

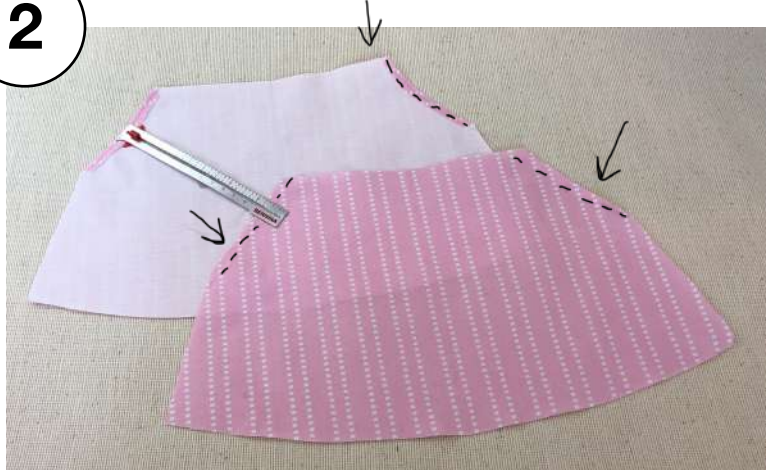
## Pinafore

1



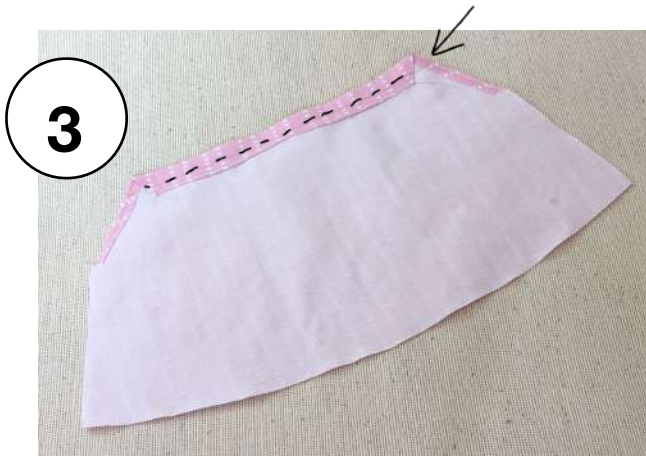
**Cut 2** pinafore pieces on fold.

2



Fold **armhole** edges 1/4" to inside. Press. Stitch.

Items made from **PLUSH LIFE®** patterns may be made and sold by individual hand crafters, but are not to be copied, manufactured or used for commercial purposes. The cut-and-sew fabric panels are not to be resold, redistributed or copied. All rights reserved, **Elaine Heigl Designs, LLC, 2019.**



Fold and press **upper edges** 3/4" to inside. Stitch 1/2" from folded edge to make casing.



**Stitch** 2 pinafore pieces together at sides.

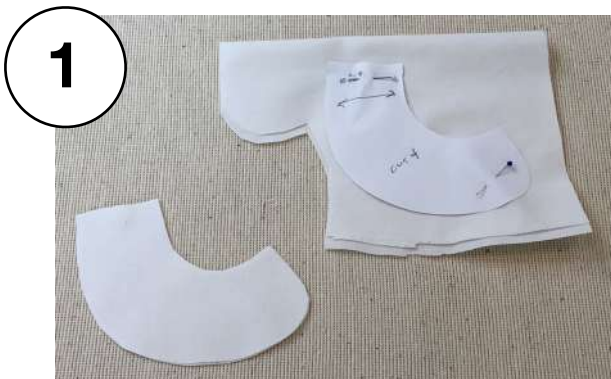


Fold and press **hem** to inside 3/4". Stitch 1/2" from fold.



Using a safety pin or bobkin, insert 8 1/2" of 1/4" **elastic** through pinafore casings. Stitch elastic ends together by hand or machine. Turn pinafore right side out

## Collar



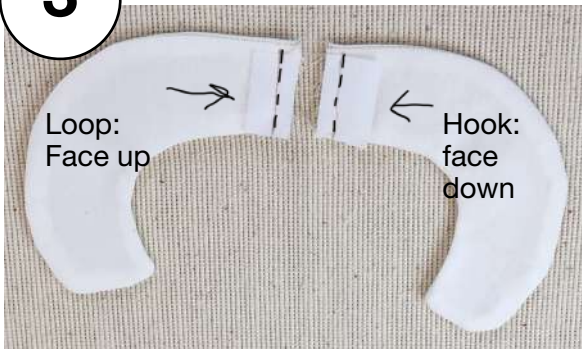
**Cut out** 4 collar pieces



**Stitch** two collar pieces together, leaving back open. **Clip corners and curves**. Turn collars right side out. Press.

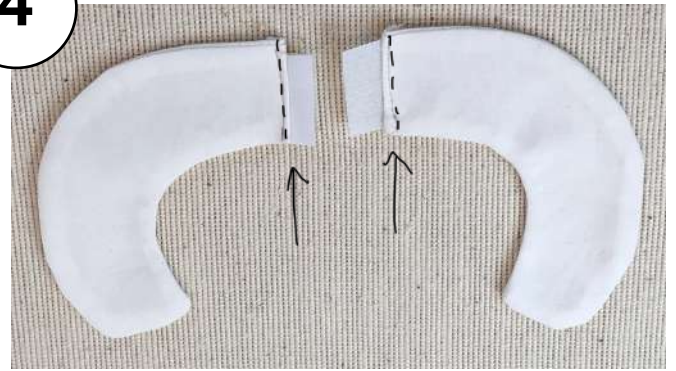


3



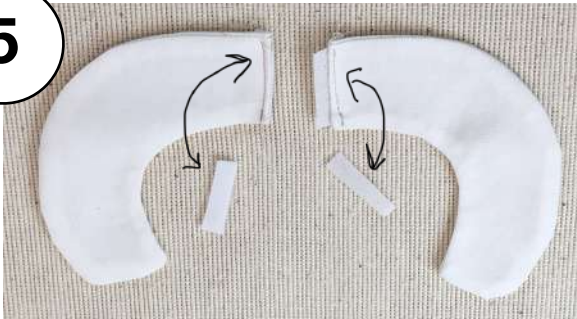
Place **Velcro** pieces onto back openings:  
Place hook side facing down on one side.  
Place loop side facing up on one side.  
Stitch.

4



Turn velcro pieces as shown. **Stitch** close to collar edge.

5



**Trim** hook side 1/4" from edge, so that  
hooks are available to catch the loop side.  
Trim the loop side close to fold

6



**Tack** collar front together  
as shown. Add a  
decorative detail such as  
a bow, button or flowers.

# PINAFORE FOR PLUSH LIFE® ANIMALS AND DOLLS

SUPPLIES:  
FAT QUARTER FABRIC  
8 1/2" OF 1/4" WIDE ELASTIC

5/8" " fold  
stitch 1/2" casing

use 8 1/2" of 1/4" elastic



## Dress front and back

Stitch 1/4" seams

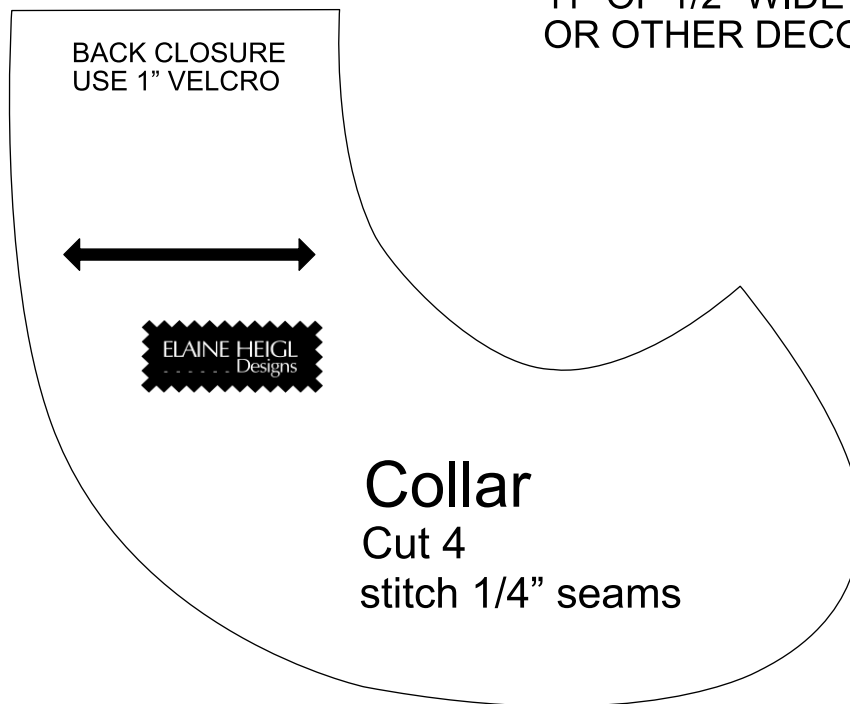
cut 2 on fold

This pinafore is an easy to sew pattern, designed to fit the PLUSH LIFE® animals and dolls. Visit [Elaineheigldesigns.com](http://Elaineheigldesigns.com) to grow your PLUSH LIFE® experience

5/8" hem

# COLLAR FOR PLUSH LIFE® ANIMALS AND DOLLS

SUPPLIES:  
SCRAP OF FABRIC  
1" VELCRO  
11" OF 1/2" WIDE RIBBON,  
OR OTHER DECORATION



This collar is an easy to sew pattern, designed to fit the PLUSH LIFE® animals and dolls. Visit [Elaineheigldesigns.com](http://Elaineheigldesigns.com) to grow your PLUSH LIFE® experience