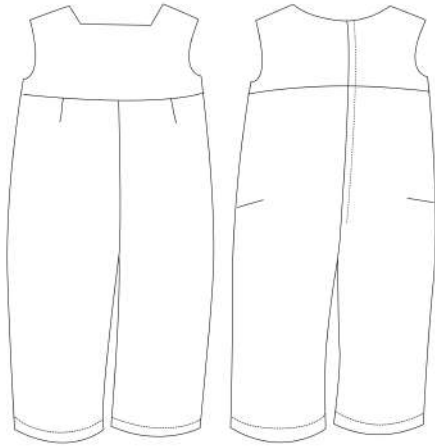


**VIEW A: JUMPSUIT****VIEW B: ROMPER**

**SKILL LEVEL:** Some experience using a sewing machine.

**SUPPLIES:**

**TOOLS & NOTIONS:**  
Pins, needle, shears, thread

**EQUIPMENT:**  
Sewing machine, iron

**GET READY...****PURCHASE CUT-AND-SEW PANELS**

Order and receive cut-and-sew fabric panel from [spoonflower.com](https://www.spoonflower.com)

Order one fat quarter of **petal signature cotton** to make one jumpsuit or romper.

Download pdf **instructions** from [elaineheigldesigns.com](https://www.elaineheigldesigns.com) website.

**GET SET... SEW!****GENERAL NOTES**

Stitch 1/4" seams

Stitch setting: 2.5

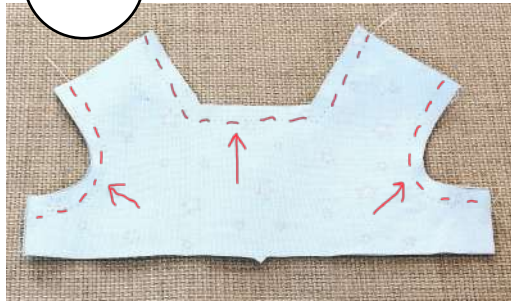
**SEWING TIP**

Hold thread ends whenever starting to stitch a seam.

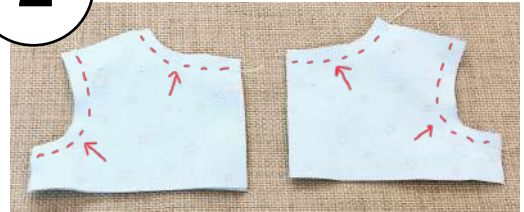
Items made from **PLUSH LIFE®** cut-and-sew fabric panels and patterns may be made and sold by individual hand crafters, but are not to be copied, manufactured or used for commercial purposes. The cut-and-sew fabric panels are not to be resold, redistributed or copied. All rights reserved, Elaine Heigl Designs, LLC, 2019,

# View A and B

1



2



3



4



## Bodice

- 1) Stitch two front bodice pieces together at neck and armhole. Clip curves
- 2) Stitch back bodice pieces together at neck and armhole. Clip curves
- 3) Turn front and backs, press.
- 4) Stitch front to backs at shoulders and sides. Press open seams.

1



2



3



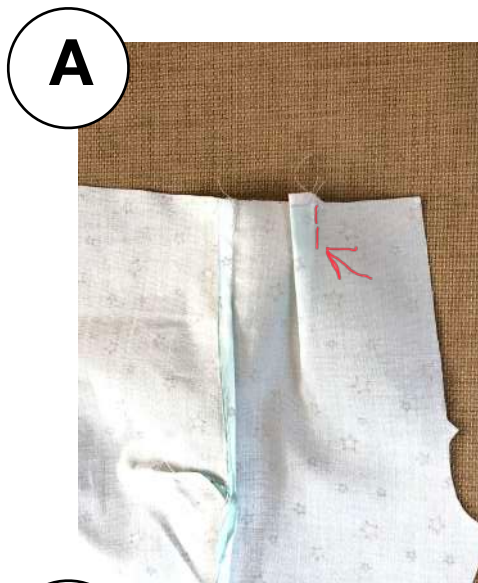
## Pant legs

- 1) Stitch back seams.
- 2) Stitch front leg to back legs at sides.
- 3) Fold leg hems 1/2". Stitch.

## View A

Jumpsuit front pant  
pleat

Fold front pleat. Stitch  
at notches. Press pleat  
fold toward center.



## B



## View B

Romper pant pocket

- 1) Fold pockets. Stitch, leaving an opening for turning.
- 2) Pin pocket on pants front so that lower edge of pocket is 1" from hem edge. Stitch pocket in place.



# View A and B Pants

- 1) Stitch pants legs together.
- 2) Turn one leg outside and insert into other leg. Stitch together at crotch seam, leaving open above double notch.



## View B

Pants  
Gather stitch upper edge



# View A and B

Pants

Pin bodice to legs.

View B Rompers: adjust gathers.

Stitch.

**A**



**B**



# Back closure

- 1) Place loop side of Velcro on back opening with loops facing down.
- 2) Fold seam and Velcro as shown. Stitch. Trim velcro within 1/4" of fold.

**1**



**2**



**3) Place hook side of Velcro on right side opening with hook side facing up. Stitch.**

**4) Trim Velcro close to fold.**

