

SKILL LEVEL: Some experience using a sewing machine.

SUPPLIES: 7 ounces Poly-fil stuffing

TOOLS & NOTIONS: Pins, needle, shears, thread

EQUIPMENT: Sewing machine, iron

GET READY...



PURCHASE CUT-AND-SEW PANELS

Order and receive cut-and-sew fabric panel from [spoonflower.com](https://www.spoonflower.com)
Order one fat quarter of fleece or minky to make one animal.
Order one yard to make 4 animals.

Download pdf instructions from [elaineheigldesigns.com](https://www.elaineheigldesigns.com) website.

GET SET... SEW!



GENERAL NOTES

Stitch 1/4" seams
Stitch setting: 2.5

SEWING TIP

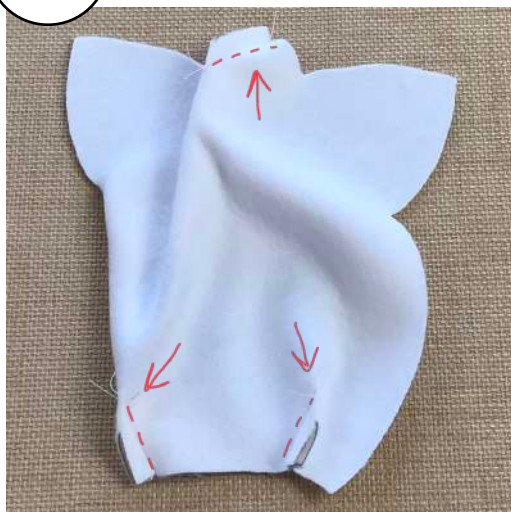
Hold thread ends whenever starting to stitch a seam.

Items made from **PLUSH LIFE®** cut-and-sew fabric panels and patterns may be made and sold by individual hand crafters, but are not to be copied, manufactured or used for commercial purposes. The cut-and-sew fabric panels are not to be resold, redistributed or copied. All rights reserved, Elaine Heigl Designs, LLC, 2019,

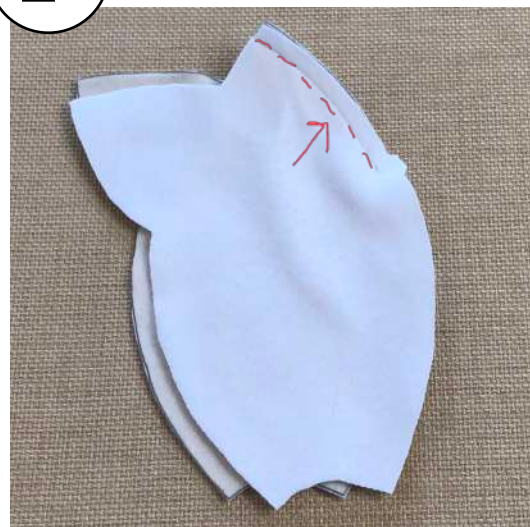
HEAD

- 1) FRONT HEAD: **Stitch** neck and top head darts.
- 2) BACK HEAD: **stitch** two back pieces together at center back, leaving open below notches, as shown.
- 3) **Stitch** FRONT HEAD to BACK HEAD.
- 4) **Clip** into corners. Clip curves. Be careful not to clip stitches.
- 5) **Turn** head right side out. Stitch ears, as shown.

1



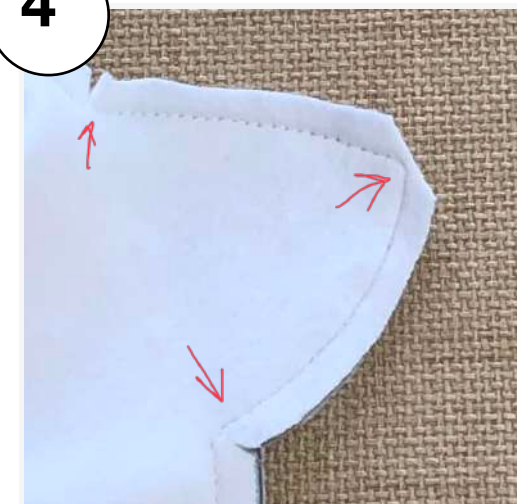
2



3



4

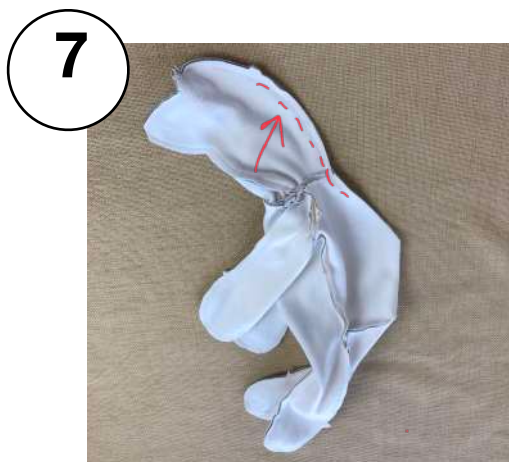
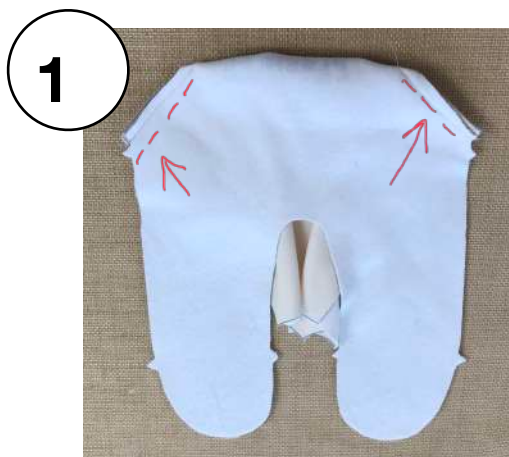


5



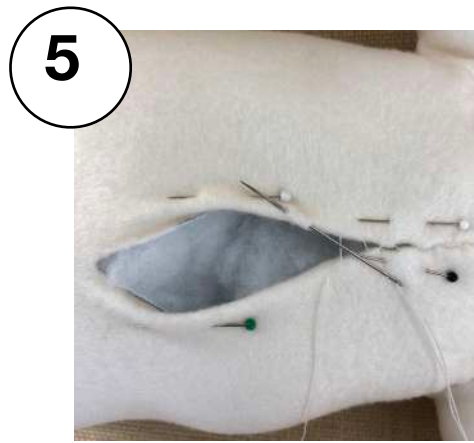
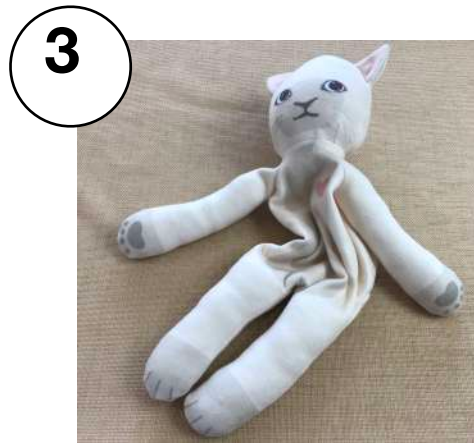
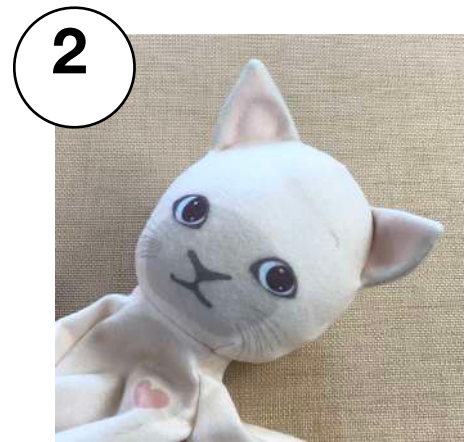
BODY

- 1) **Stitch** BACK BODY darts at sides.
- 2) **Stitch** FRONT to BACK, as shown.
- 3) To reinforce crotch, **stitch** again.
- 4) **Stitch** ARMS to body at armholes.
- 5) **Stitch** arm seams.
- 6) Insert HEAD into body, as shown. **Stitch** neck seam.
- 7) **Stitch** center back seam, leaving a 3" opening for turning and stuffing body.
- 8) **Clip** curves at crotch and paws, being careful not to clip stitches.



STUFF AND FINISH

- 1) **Turn** bear right side out.
- 2) **Stuff** head very firmly, shaping head by turning and studying shape as you add stuffing.
- 3) **Stuff** arms and legs firmly, ending stuffing at torso so that legs and arms will move freely when torso is stuffed.
- 4) **Stuff** torso, shaping rounded belly, making sure a space remains between limbs and torso. Test that arms and legs move freely, adjust stuffing if needed.
- 5) Securely hand **stitch** back opening closed, using ladder stitch.



TAIL OPTION

- 1) **Stitch** tail. Trim and clip corners and curves.
- 2) **Turn, stuff and slipstitch** opening
- 3) Tack tail to back of cat.

