

# SLEEPOVER SET for 15" bears

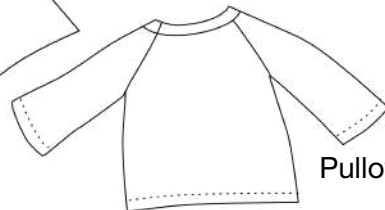
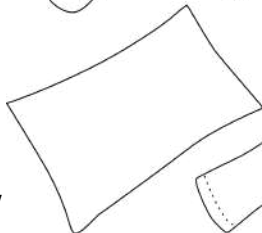
sewing guide sheets for cut&sew fabric panel

Sleep mask



Pullover front view

Pillow



Pullover back view



Bear sold separately

**Product description:** cotton/spandex knit: one pullover sleep shirt, mask, and pillow.  
*Designed to fit cut&sew PLUSH LIFE® 15" signature bear.*

## GET READY...

Order and receive a cut&sew fabric panel.  
Print out guide sheet



## GET SET...

Cut out and organize pieces  
Review instructions.



**SKILL LEVEL:** some experience using a sewing machine.

### SUPPLIES:

- \*Matching thread
- \*Handful of stuffing
- \*Small piece of felt
- \*5 1/2" of 1/4" wide elastic

### TOOLS & NOTIONS:

- \*Pins
- \*Needle
- \*Scissors

### EQUIPMENT:

- \*Sewing machine
- \*Iron

### GENERAL NOTES:

- \*Stitch 1/4" seams
- \*Stretch (zig zag) stitch setting (1/2.5)
- \*Use needle for stretch fabrics.

**TIP:** Hold thread ends whenever starting to stitch a seam.

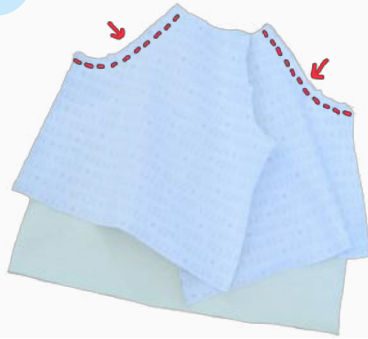
# SEW!

# CUT&SEW PLUSHLIFE® INSTRUCTIONS FOR SLEEPOVER SET

## T-SHIRT

- 1) Stitch sleeve armholes to front armholes.
- 2) Stitch one back sleeve armhole to one back armhole.
- 3) Fold and press neckbands and sleevebands as shown.
- 4) Pin neckband to neck. Stitch to neck, stretching neckband to fit.
- 5) Stitch back to sleeve at remaining armhole.
- 6) Pin sleevebands to sleeves.
- 7) Stitch sleevebands to sleeve, stretching sleevebands to fit.
- 8) Stitch front to back at sides.
- 9) Fold 1/2" hem. Stitch. Turn shirt right side out.

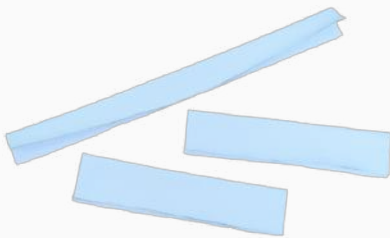
1 stitch front to sleeves



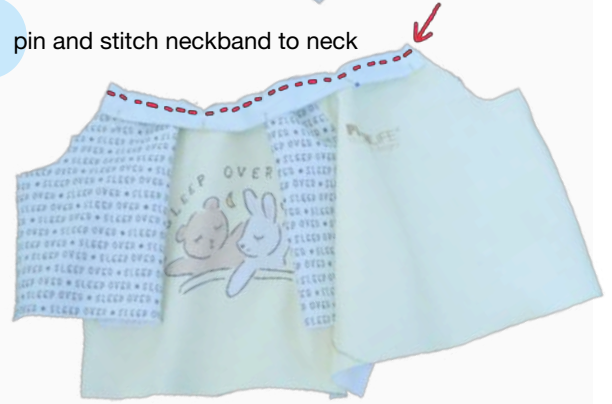
2 stitch back to one sleeve



3 fold and press bands



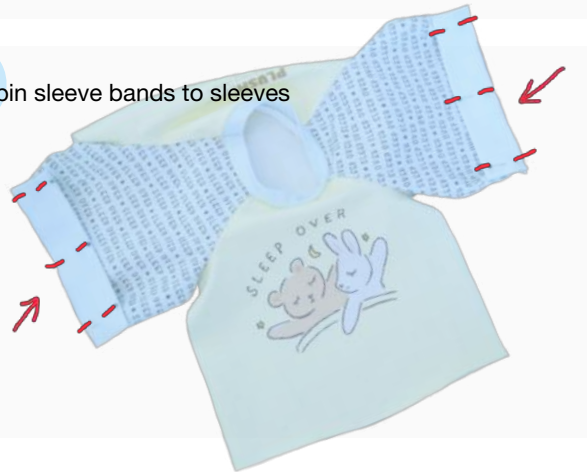
4 pin and stitch neckband to neck



5 Stitch remaining armholes together



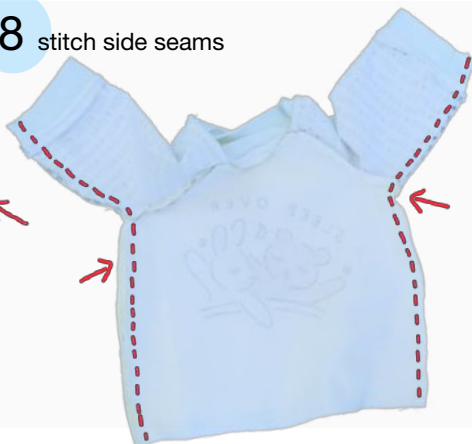
6 pin sleeve bands to sleeves



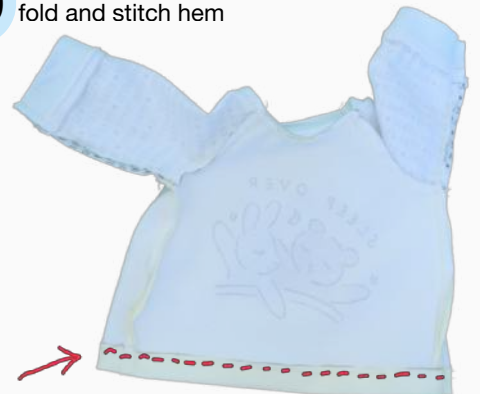
7 stitch sleeve bands to sleeves



8 stitch side seams



9 fold and stitch hem



# CUT&SEW PLUSHLIFE® INSTRUCTIONS FOR SLEEPOVER SET

## SLEEP MASK

### Supplies:

5 1/2" of 1/4" elastic

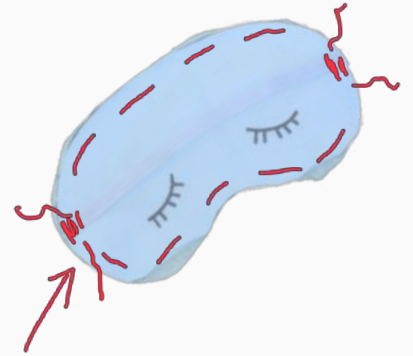
### Felt piece

- 1) Cut felt or interfacing, using mask as cutting guide.
- 2) Layer mask piece over felt piece. Place elastic on mask piece with ends at markings. Baste. Stitch elastic in place.
- 3) Layer mask pieces together, right sides facing. Stitch around leaving a 2" opening for turning.
- 4) Clip around seam allowance as shown, careful not to clip stitching.
- 5) Turn, press. Slipstitch opening

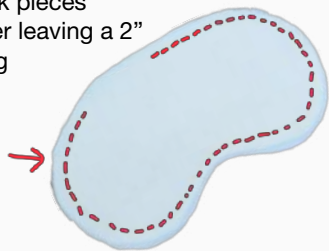
1 cut felt interfacing for mask



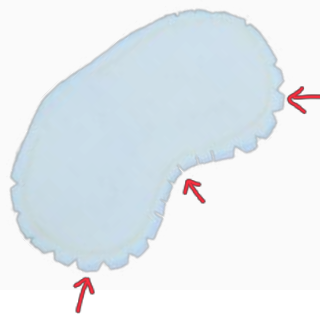
2 Baste together mask front, felt and elastic as shown. Stitch elastic ends



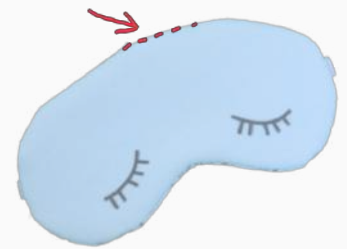
3 layer and stitch all mask pieces together leaving a 2" opening



4 clip curves



5 turn, slipstitch opening



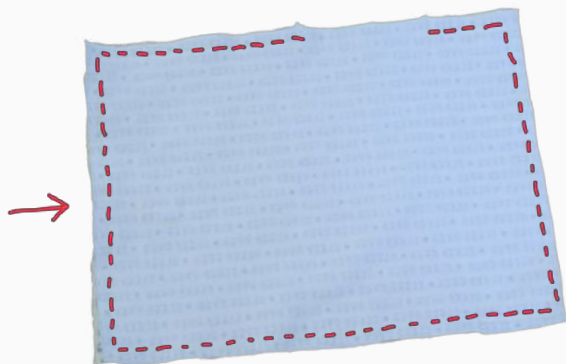
## PILLOW

### Supplies:

handful of stuffing

- 1) Pin two pillow pieces with right sides together. Stitch around, leaving opening between notches.
- 2) Turn right side out. Stuff. Slipstitch opening.

1 stitch pillow pieces together, leaving an opening



2 turn, stuff, then slipstitch opening

